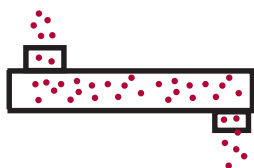




U-Trough, Heating & Cooling Conveyors

... The best begins with S. Howes!



Applications:

- ◆ Powdered Milk
- ◆ Ground Meat
- ◆ Glass Bead
- ◆ Chemicals
- ◆ Cosmetics
- ◆ Pigments
- ◆ Regrind
- ◆ Plastics
- ◆ Pellets
- ◆ Resins
- ◆ Batter
- ◆ Cereal
- ◆ Sugar
- ◆ Food
- ◆ Grain
- ◆ Flour
- ◆ Corn
- ◆ Seed
- ◆ Clay
- ◆ Salt

Other mechanical conveying equipment available:

- ◆ Tubular
- ◆ Split-tube
- ◆ Vibratory

High Quality and Heavy-Duty Construction

Mechanically convey dry, free flowing and sluggish materials

Inclined U-Trough Conveyor



Heating Conveyor with Jacket



Free Testing!

Custom Conveyors

*Parts & Service
Readily Available*

Photos and drawings are not intended to show or suggest use or non-use of any operator protection systems

S. HOWES

Established 1856

Member



PROCESS EQUIPMENT
MANUFACTURERS' ASSOCIATION

Phone: (716) 934-2611
Toll Free: (888) 255-2611
Fax: (716) 934-2081
sales@showes.com

S. Howes, Inc.
25 Howard St.
Silver Creek, NY 14136
www.showes.com

JOB-ENGINEERED:

- ◆ The S. Howes engineering staff will design a U-trough conveyor to meet your conveying and/or processing requirements. S. Howes has built thousands of U-trough conveyors, nearly all of which have unique designs and specifications

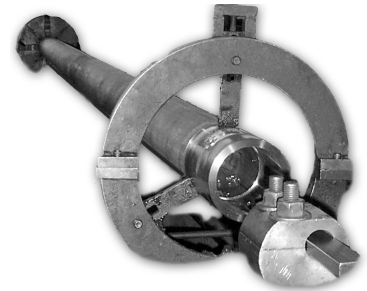
CUSTOM SIZES:

- ◆ Conveyor length and auger diameter depends on product density and desired throughput capacity. Refer to the U-trough conveyor selection guide below so that S. Howes engineering staff can specify the appropriate conveyor for your needs
- ◆ Stands can be portable, fixed or custom designed
- ◆ Inlet hoppers are designed for specific materials and come in various sizes and shapes
- ◆ Motors can be mounted at either end of the unit

OPTIONS AVAILABLE:

- ◆ Heating or cooling transfer jacket
- ◆ Heating or cooling auger shafts
- ◆ Continuous and ground smooth welds
- ◆ Special abrasion resistant seals
- ◆ Packing gland seals
- ◆ Slide gates
- ◆ Starter controls can be mounted on base
- ◆ Self-contained dust collector

u-trough screw
shaft in machining
process



U-TROUGH CONVEYOR SELECTION GUIDE

CRITERIA	COMMENTS
Throughput Capacity	Based on feed rate and desired output. Usually measured in lbs or cubic feet per hour.
Density & Characteristics of Material	Density measured in lbs per cubic feet. Material characteristics are either powders, cakes, slurries, clay, etc.
Length Conveyed	Overall length to be conveyed. Hanger bearings may be required for longer shafts
Height Conveyed	Overall height to be conveyed - where required
Inlet	Type and number of inlets desired (e.g. nipples, hoppers, grating, open trough, slide gates)
Discharge	Type and number of discharges desired (e.g. spouts, slide gates, baffel, valves, grating)

HEATING & COOLING CONVEYOR SELECTION GUIDE*

Temperature	Temperature of material entering u-trough at inlet and desired temperature of material at discharge end
-------------	---

Note(*): Also use U-Trough conveyor selection criteria to identify heating or cooling design specifications



Member  PROCESS EQUIPMENT
MANUFACTURERS' ASSOCIATION

Phone: (716) 934-2611
Toll Free: (888) 255-2611
Fax: (716) 934-2081
sales@showes.com

S. Howes, Inc.
25 Howard St.
Silver Creek, NY 14136
www.showes.com